

Proposed River Thames Marina Development, near Wallingford

Noise & Air Quality

A series of noise and air quality monitoring and predictions for the construction phase of the proposed development has been carried out at ten potentially sensitive locations. These have been assessed against criteria in the National Planning Policy Framework and National Planning Practice Guidance.

Noise level predictions during the Construction Phase

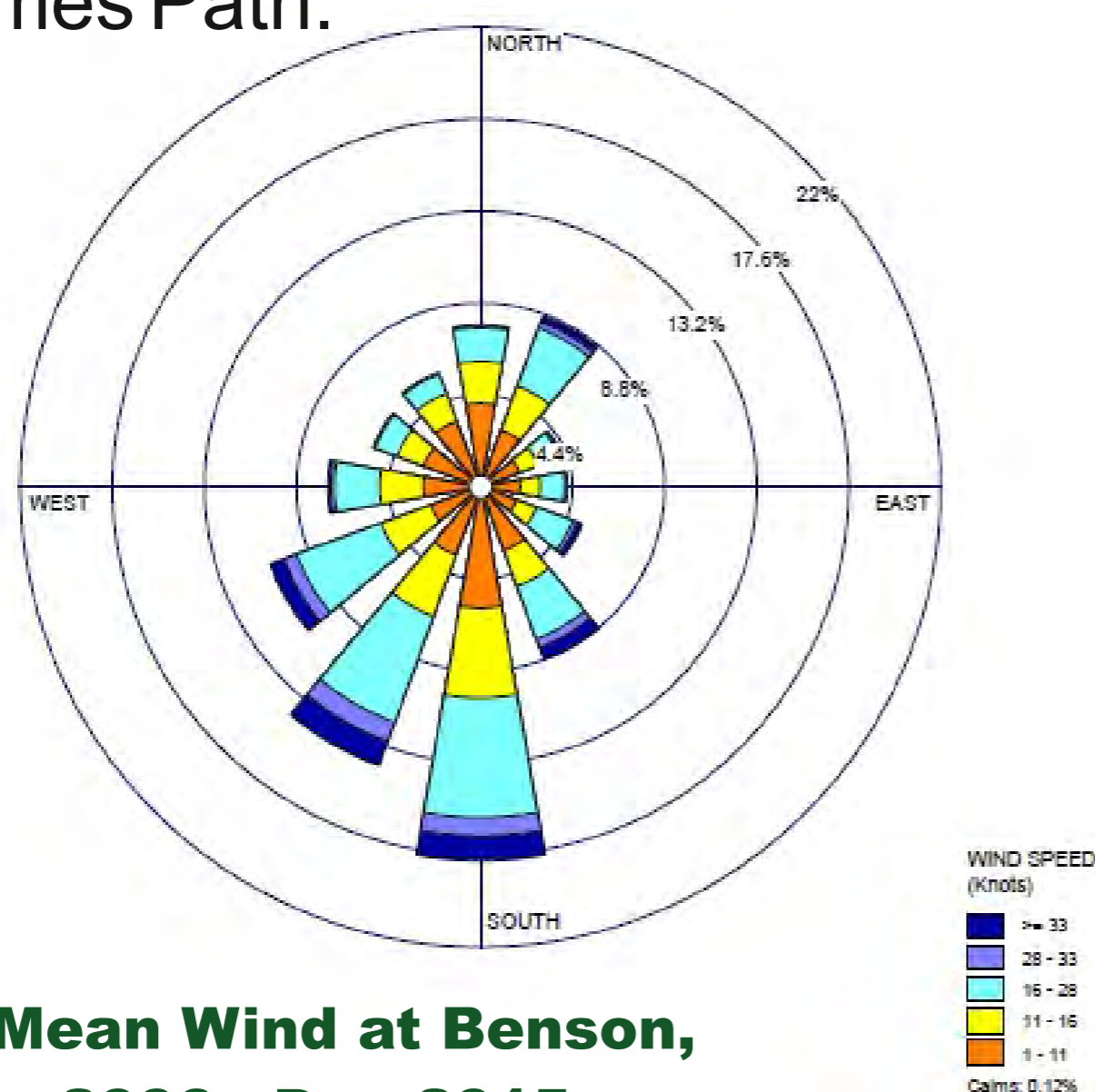
Location	Existing Noise level (dB) $L_{A90,1h}$	Predicted worst case $L_{Aeq,1hr}$	Government Guidance L_{Aeq}
1 Elizabeth House	46	52	55
2 Mogewell Park Nursery	46	51	55
3 Coachmans Cottage	46	47	55
4 The Lodge, Wallingford Road	46	43	55
5 The Lodge, Winterbrook Lane	56	47	55
6 Winward House	45	54	55
7 Mead Furlong	45	54	55
8 Barrington Court	44	51	55
9 St John the Baptist Church	44	52	55
10 Spence Pavillion	44	50	55

All the predicted noise levels are based on worst case scenarios – ie where marina construction operations are closest to the most sensitive properties and environments – and potentially have the greatest influence on the noise levels at these locations.

The noise assessment, carried out by independent, specialist consultants, demonstrates that predicted worst case levels, at all locations, are below government guidelines.

The predominate wind direction in this area is from the south and southwest.

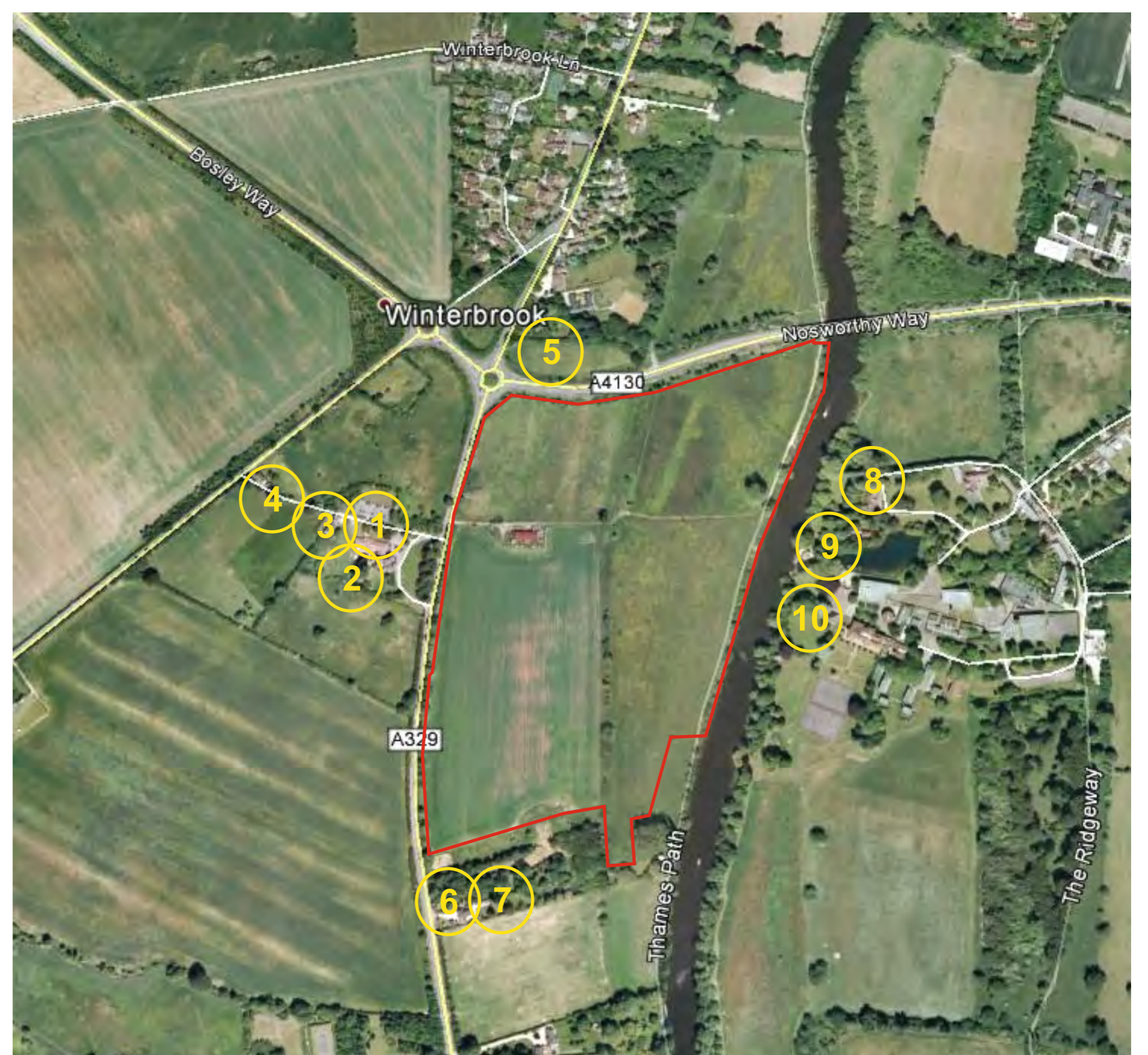
The air quality assessments, carried out by independent specialist consultants, demonstrate that predicted worst case dust levels, at all locations, are significantly below government guidelines. They will have no impact on the air quality of the areas surrounding the site or the adjacent Thames Path.



Wind Rose for Mean Wind at Benson, Oxfordshire Jan 2006 - Dec 2015

Approximate Noise Level dB(A) Typical Examples:

0	Threshold of hearing
30	Rural area at night, still air
40	Public library
50	Quiet office, no machinery
60	Normal conversation
70	Inside a saloon car
80	Vacuum cleaner
100	Pneumatic drill
120	Threshold of pain



Background Noise monitoring Locations and Dust prediction locations

Environmental protection measures have been proposed as part of the development to ensure there is no impact, such as:

- Noise attenuation bunds & planting around the plant area & access
- Planting to fill out existing hedges to provide visual and noise barriers
- Regular monitoring for noise and dust during construction and marina operation
- Permanent on-site marina management to control any potential adverse noise issues